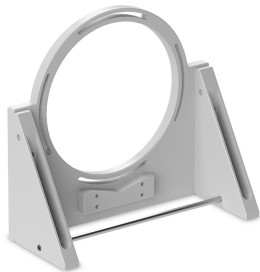


CMHO240R | DATASHEET

Clamping mechanics for TCxx240 lenses and LTCLHP240-X illuminators



The accurate alignment of optical components is crucial to the accuracy of a measurement system. In addition to the stability of the optical components, the system mechanical design must ensure that the optical axis is orthonormal to the measurement plane.

For this purpose Opto Engineering® supplies **CMHO series** clamping mechanics, compatible with our telecentric lenses and collimated illuminators.

Three-point mounting grants very precise and stable alignment of the optical components, also making the assembly process quick and simple.



SPECIFICATIONS

Mechanical specifications

Length	(mm)	170.0
Width	(mm)	410.0
Height	(mm)	377.2
Optical axis height	(mm)	216.2
Mass	(g)	6357

COMPATIBLE PRODUCTS

Full list of compatible products available [here](#).



A wide selection of innovative machine vision components.

All product specifications and data are subject to change without notice to improve reliability, functionality, design or other. Photos and pictures are for illustration purposes only. Data are reported by design, actual lens performance may vary due to manufacturing tolerances.